

ELA workshop container

Combination of two or three workshop containers as large-capacity unit

ela[container]



Brief Description

Mobile, spacious and flooded with light – the ELA workshop system has a generous floor space of 30 m² or 45 m² and is ready for use immediately. Comprehensive shelving and electrical installation is included in the scope of delivery as standard. The workshop system can also be equipped with a work bench on request.

The steel frame construction with a thickness of 6 mm and fully welded walls ensure security and a long service life. To ensure comfortable working conditions, several windows let in light and fan heaters generate pleasant room temperatures.

The additional robust MZ external door ensures quick access to the workshop.

ELA workshop containers meet the high quality standards of ELA: certified quality – made in Germany.

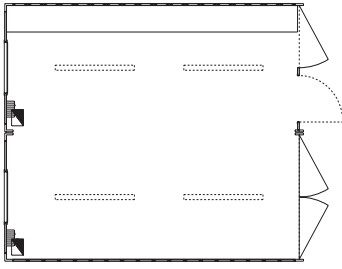
Features

- + Sturdy steel frame construction made of 6 mm thick special profile
- + Half-side double swing door, 1 or 2 double swing doors and 1 MZ external door
- + Floor space approx. 30 m² or 45 m²
- + Roof, side walls and end walls made of 1.5 mm thick, fully welded trapezoidal sheeting
- + 8 ISO container corners per container
- + Plywood glued multiple times over the crosswise floor joists
- + Electrical installation according to DIN VDE 0100
- + Electric subdistribution board with ground fault circuit interrupter and various circuit breakers
- + Electric input and output CEE 400 V/32 A per container
- + CEE wall outlet 400 V/16 A and 400 V/32 A
- + Heavy-duty shelving
- + Optional: work bench with vice
- + Optional: ELA theft protection

2 x 20 foot ELA workshop container

Article: R2C1G25-WERK

Dimensions: 6,058 mm x 4,876 mm x 2,591 mm



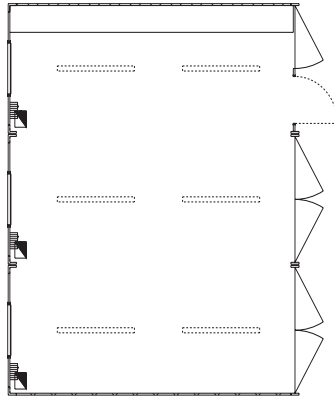
Features

- + 1 half double swing door,
1 double swing door
- + 1 multi-purpose exterior door 875 mm x 2,000 mm in sturdy, galvanised and double-walled construction, security cylinder lock with profile cylinder and 3 keys
- + Electrical installation according to DIN VDE 0100, 400/230 V, 50 Hz, IP44
- + Electric input and output CEE 400 V/32 A per container
- + Electric subdistribution board with ground fault circuit interrupter and various circuit breakers
- + 4 surface-mounted light fixtures, each with 1 x 58 W
- + Grounded receptacles and light switches
- + 1 CEE wall outlet 400 V/16 A
- + 1 CEE wall outlet 400 V/32 A
- + Heavy-duty shelving
- + 2 forced air heaters, 2 kW
- + Optional: work bench with vice
- + Optional: ELA theft protection

3 x 20 foot ELA workshop container

Article: R3C1G25-WERK

Dimensions: 6,058 mm x 7,314 mm x 2,591 mm



Features

- + 1 half double swing door,
2 double swing doors
- + 1 multi-purpose exterior door 875 mm x 2,000 mm in sturdy, galvanised and double-walled construction, security cylinder lock with profile cylinder and 3 keys
- + Electrical installation according to DIN VDE 0100, 400/230 V, 50 Hz, IP44
- + Electric input and output CEE 400 V/32 A per container
- + Electric subdistribution board with ground fault circuit interrupter and various circuit breakers
- + 6 surface-mounted light fixtures, each with 1 x 58 W
- + Grounded receptacles and light switches
- + 1 CEE wall outlet 400 V/16 A
- + 1 CEE wall outlet 400 V/32 A
- + Heavy-duty shelving
- + 3 forced air heaters, 2 kW
- + Optional: work bench with vice
- + Optional: ELA theft protection