

ELA NEWS

ela[container]

The customer magazine
Issue 44 / December 2017

127



A HUGE PLAY CENTRE

1

Kindergarten
for the city of Kaarst



Flexible solution: the city of Kaarst had these ELA modules converted into a kindergarten.



Free rein: the new kindergarten is the perfect location for play and physical activity.

Fig. 01

Friendly reception for children and parents: the entrance area at the kindergarten.

Fig. 02

Multi-functional: in this ELA module, everything is in the right place.



01

“These ELA rooms are a children’s paradise for play and exploration.”

Michael Wolf —
Project Manager
ELA Container GmbH



02



03



04



06



05

Fig. 03

Almost invisible acoustic elements ensure that the multi-purpose room also benefits from pleasant noise damping.

Fig. 04

An additional feature of the 600 square metre facility: office rooms flooded with light and packed with modern fittings.

Fig. 05

Finger trap protection on doors and touch-proof plug sockets enable safe and carefree play.

Fig. 06

As a combination of multiple premium modules, the spacious group room can be used in different ways for a wide variety of purposes.



07



08

Fig. 07

Lovingly arranged sleeping areas: a place for dreams and relaxation during the lunch break.

Fig. 08

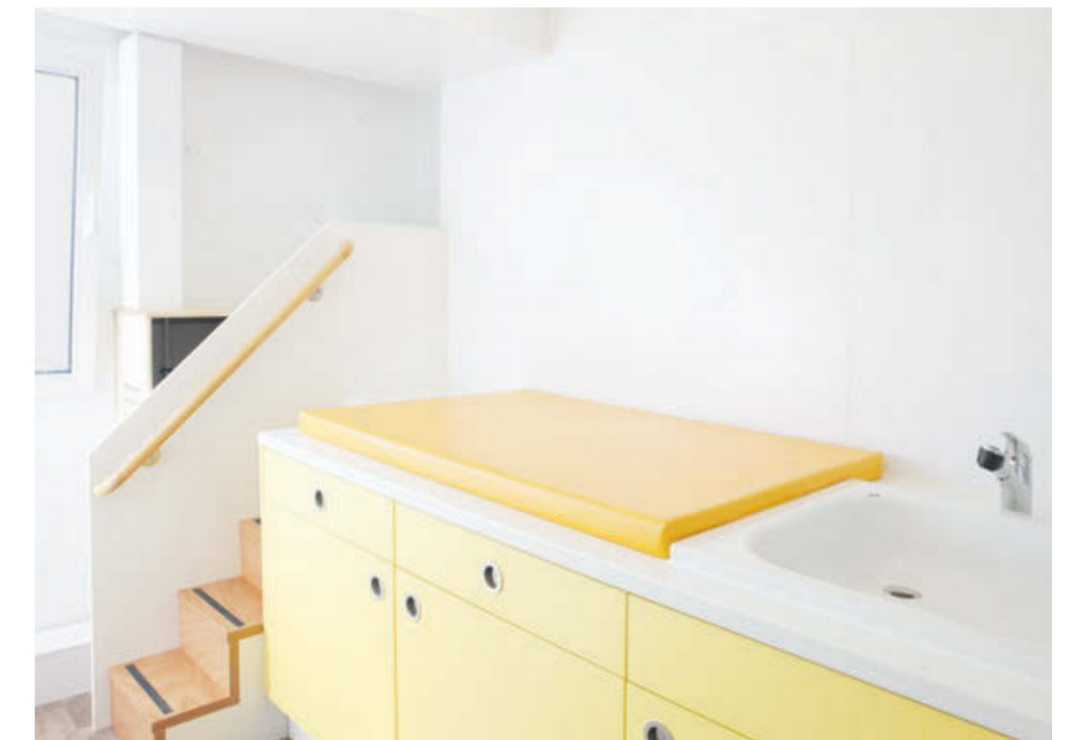
In this room children find the peace and comfort they need.

Fig. 09

Warm colours and wood tones add a friendly ambience to the kindergarten.

Fig. 10

A sanitary area especially for children: clean, functional and with coloured elements. ELA has adjusted the height of the washbasins and toilets to suit the height of the children. Solar collectors on the roof assist the hot water supply.



09



10

“When it comes to kindergartens and schools, more and more municipalities are opting for flexible and economic room solutions from ELA.”

Michael Wolf —
Project Manager
ELA Container GmbH



The kindergarten is composed of ELA module rooms and integrated into spacious outdoor grounds with play equipment.

ELA kindergarten in Kaarst

Investing in ELA modules pays off. The city of Kaarst in the German state of North Rhine-Westphalia acquired multifunction rooms from ELA some time ago – the room specialist has now converted these into a kindergarten, creating a paradise for play and exploration.

Nestled amidst greenery, the kindergarten stands out even at a distance. Boasting a white and orange facade and a green roof, it is surrounded by spacious outdoor grounds featuring a play area. Around 40 children frolic through the rooms, which are decorated in a bright and friendly manner. The kindergarten covers more than 600 square metres and is divided into two group rooms, a multi-purpose room, several offices and storage areas, sanitary areas and quiet areas. The excellent acoustics make a good impression, as ELA Project Manager Michael Wolf explains: “We fitted certain rooms with acoustic panels. In addition, we adjusted a number of details to ensure safe and carefree play for the children.” These include finger trap protection on doors, touch-proof plug sockets, radiator covers and a special safety device on the main entrance door that prevents unauthorised access and also stops the children from exiting the kindergarten of their own accord.

The sanitary area has also been designed with a particular focus on the needs of the children. “The unfamiliar scale may come as a surprise to adults, but it is hugely important for children to use washbasins and toilets that are at the right height for them,” says Wolf, noting how ELA has adapted the sanitary modules accordingly. Another highlight of this kindergarten built from mobile ELA rooms: solar collectors on the pitched roof that was installed on site. “In this way, solar energy is used to supply the facility with hot water,” states Wolf.

ELA Container creates kindergartens in module rooms on a regular basis, usually in order to bridge construction or conversion phases. “More and more municipalities are looking to cover their spatial requirements in a modern, flexible and economic fashion,” Wolf explains. “ELA Container provides the products they need – for purchase or rental.”

Details

Location
Kaarst

Type and number of containers
28 ELA premium containers
7 ELA quality all-rounders
2 ELA sanitary containers
(combined into one container facility)

Usable space
approx. 600m²

Usage
Kindergarten with group rooms, sleeping areas, sanitary rooms, a multi-purpose room and offices.

Colour/floor
Exterior walls (at request of customer):
pebble grey (RAL 7032)
Interior walls and ceiling: white
Floor: PVC flooring, marbled grey

Special equipment
Finger trap protection, touch-proof plug sockets, acoustic panels, exterior doors with panic lock, radiator covers, canopies, mirror louvre luminaires, smoke protection wall with smoke protection door, presence detector, emergency lights, networked smoke alarms

Purchase or rental
Purchase

Duration of usage
Long term

Installation deadline
Summer 2017



Fig. top

The large, bright exhibition rooms set the scene perfectly for the film installation.

Fig. bottom

True quick-change artists: ELA modules for the World Reformation Exhibition in Lutherstadt Wittenberg.



Film installation in ELA exhibition rooms

The 500th anniversary of the Reformation is being celebrated with an international exhibition in Lutherstadt Wittenberg. Visitors are able to discover art and culture at seven different locations across the city, with ELA Container playing a key role. The mobile room specialist supplied six premium modules to create a 110 square metre exhibition area for a film installation. On site, the containers were enhanced with domed roofs and encased in a white structure.

The bright, spacious rooms feature large entrance doors and invite visitors to engage with the topic of the Reformation. Neither the exterior nor the interior of the rooms bear any trace of being an interim solution. ELA modules provide an ideal functional basis for creating striking exhibition spaces.

This view is shared by project manager Jens Graube from FAIRNET GmbH, a specialist firm for trade fairs and events that was tasked with designing the exhibition rooms. Graube recommended ELA Container to his client and was once again delighted with the collaboration: "We are highly satisfied with the order processing, development and consulting provided by ELA Area Sales Manager Michael Haas. The production, delivery and assembly of the container facility were performed flawlessly. We will be happy to recommend that our future clients also turn to ELA as an expert supplier for mobile rooms."

Haas himself is thrilled with the outcome: "With this project, we have again been able to demonstrate our capabilities: tailored container solutions, precisely in line with customer needs, delivered in next to no time and handed over ready for occupation. An excellent result."

Details

Location
Lutherstadt Wittenberg

Type and number of containers
6 ELA premium containers

Usable space
110 m²

Usage
Exhibition rooms

Colour/floor
Exterior walls: pebble grey (RAL 7032)
Interior walls and ceiling: white
Floor: PVC flooring, marbled grey

Special equipment
None

Purchase or rental
Rental

Duration of usage
4 months

Installation deadline
05/2017



Fig. top

Mobile clubhouse built from ELA modules: sophisticated surroundings demand the highest quality.

Fig. centre

The outdoor terrace provides players and guests alike with a wonderful view of the golf course.

Fig. bottom

During the conversion phase, hospitality continues to be provided in the spacious guest room.



Flexible golf clubhouse built from ELA containers

Peace, the beauty of nature, birdsong – golf has come to embody an ideal blend of sport and relaxation. This is precisely what attracts guests to the HEITLINGER GOLF RESORT at the heart of the Kraichgau region of Germany: a rejuvenating escape from the everyday, surrounded by unspoiled nature.

The adjoining golf club now bears the hallmark of ELA Container, with the room specialist providing an interim clubhouse solution during the full-scale renovation of the HEITLINGER GOLF RESORT. "This ensures that the resort can continue to meet the requirements of members and guests during the renovation work, making it possible to enjoy a round of golf without any distractions," explains resort manager Christine Jacklin.

The reopening is scheduled for late April 2018, with 15 ELA containers serving as a clubhouse in the meantime. Covering more than 230 square metres and featuring a combination of offices, recreation modules and sanitary modules, this provides sufficient space for the club administration, changing facilities and catering. The appearance of the ELA clubhouse blends in well with the look of the golf resort. A covered wooden terrace maintains the link to nature, with tables and benches inviting golfers to take a break and unwind.

"Boasting high-quality material processing, a comfortable indoor climate and a pleasant atmosphere, ELA rooms are also suitable for more upscale environments," explains ELA Area Sales Manager Oliver Kölblin. "It is important to ensure that guests feel at ease."

The planning and the attentive service provided by ELA have wowed the client: "Everything went smoothly and ELA Area Sales Manager Oliver Kölblin took care of our every need." Kölblin is delighted with this feedback: "At ELA, high quality service is self-evident."

Details

Location
Östringen-Tiefenbach

Type and number of containers
9 ELA premium containers
6 ELA quality all-rounders
of which 4 ELA sanitary containers
(combined to form one container facility)

Usable space
237 m²

Usage
Golf clubhouse with recreation room, office, changing facilities, shop and sanitary area

Colour/floor
Exterior walls: pebble grey (RAL 7032)
Interior walls and ceiling: white
Floor: PVC flooring, marbled grey

Special equipment
Air-conditioning system (split air-conditioning unit) for cooling and heating, smoke alarm

Purchase or rental
Rental

Duration of usage
6 months

Installation deadline
02/2017



4

ENJOYING A REFRESHING LUNCH BREAK

Fig. top

The interim canteen at Schmitz Cargobull features barrier-free access via a ramp.

Fig. centre

Furnishings, colours, light and floor plan form a harmonious overall impression.

Fig. bottom

This ELA facility meets the highest demands in terms of comfort, functionality and technology.



ELA canteen for Schmitz Cargobull

At break time, it's best for employees to get away from their workstations. Modern canteens provide an excellent opportunity to enjoy lunch or a snack. At the same time, they are also an important space for communication beyond day-to-day operations.

At Schmitz Cargobull in Vreden, Germany, the canteen has been relocated to a flexible ELA room solution for two years. But that hasn't forced this trailer manufacturer to scale back on atmosphere and comfort. Colours, lighting and fittings are perfectly coordinated and small sitting areas generate a sense of privacy.

"In collaboration with gastrobau24.de, we developed a sophisticated concept for an appealing canteen," explains ELA Area Sales Manager Simon Harenkamp. The concept is based around five combined ELA premium modules that extend to a special height of over three metres and have been positioned on mobile ELA concrete foundations. ELA has also installed additional insulation in the floor. Floor-to-ceiling windows and a great many skylights ensure a bright and transparent appearance. "The large number of windows further enhances the inviting character of this canteen," says Harenkamp. Besides the dining area, the facility also includes a kitchen and a sanitary area.

When it comes to canteens, refectories and dining areas, more and more companies are opting for room solutions from ELA. This is because ELA's mobile modules meet the highest demands with respect to climate, comfort and functionality. They enable flexible planning and can be equipped ready for occupation upon delivery if required.

Details

Location
Vreden

Type and number of containers
5 ELA premium containers

Usable space
90 m²

Usage
Canteen with kitchen and sanitary area

Colour/floor
Exterior walls: pebble grey (RAL 7032)
Interior walls and ceiling: white
Floor: PVC flooring, marbled grey

Special equipment
Additional insulation in floor area, skylights, floor-to-ceiling windows, double glazing, mobile ELA concrete foundations, air-conditioning units

Special features
Room height increased by 25 cm

Purchase or rental
Rental

Duration of usage
2 years

Installation deadline
By the end of 2016



5

COFFEE TO GO FOR STUDENTS

Fig. top

Proud: the university project participants in an ELA container they converted themselves.

Fig. centre

From black coffee to beer: this special café boasts an appealing range for students.

Fig. bottom

Sponsored by ELA, the sea container underwent a stylish conversion that was carried out by the design students.



Pop-up café in an ELA sea container

Coffee and students go together like tutors and lecture halls. At Düsseldorf University of Applied Sciences, an ELA container converted by students themselves now provides a welcome caffeine fix.

As part of a four-week workshop, architecture and design students from Düsseldorf University of Applied Sciences and the Peter Behrens School of Arts designed and built a mobile café. ELA showed its support for this university project by providing a sea container for conversion. The project participants converted the three-metre long steel container into a small café for serving students their daily dose of coffee.

Michael Schmidt of ELA Marketing is thoroughly impressed with this project: "We were only too happy to support the workshop by providing one of our containers. It was also intriguing for us to see how the students realised their project with the help of our product."

The result is clear to see, with the double door of the container enabling optimum use of the space. This ensures that the students have sufficient room for counters, refrigerators and the coffee machine. The pebble grey colour of the container and the wooden floor underline the bright and inviting atmosphere of the café.

As head of the workshop, Tobias Jochinke praised the service provided by ELA: "The container was delivered on time and the installation was extremely quick. We were especially impressed by the condition and quality of the ELA container. This has provided the ideal basis for our next-level practical project." Schmidt is pleased with this outcome: "Quality products demand comprehensive service. We look forward to further collaborations with the university."

Details

Location
Düsseldorf

Type and number of containers
1 ELA sea container, 10-foot

Usable space
7,5 m²

Usage
Pop-up café

Colour/floor
Exterior walls: pebble grey (RAL 7032)
Interior walls and ceiling: white
Floor: wood

Purchase or rental
Cooperation

Duration of usage
Long term

Installation deadline
07/2017

MAKERS WITH HEAD, HANDS AND HEART



As a family company, we place particular emphasis on strong working relationships and an honest exchange of ideas within the team. We implement flat hierarchies and encourage a cooperative approach on all levels. At ELA, all employees are valued and respected.

Engineers developing new products, logistics coordinators, members of the internal sales and field sales teams, installers at the factory or on site: whatever their role, our employees combine a passion for our products and a diversity of skills for a common cause.



SPACE FOR FUTURE PLANS AND IDEAS

As an employer, we offer our employees substantial opportunities to grow and develop. Your personality and your ideas are what help us shape the future.



As an employer, we offer our employees substantial opportunities to grow and develop. Your personality and your ideas are what help us shape the future.

HONEST AND DIRECT



We are a global company with international offices and over 650 employees.

AT YOUR SIDE FROM THE EMSLAND TO DUBAI



A REAL BOX OF TRICKS

Our containers are used anywhere and everywhere. With a capacity of up to 54 cubic metres, each of our containers is a real box of tricks. That's why we think big at ELA.



To find out more about ELA as a company and an employer, visit: www.ela-container.com

THE ELA TEAM

ICE HOCKEY WORLD CHAMPIONSHIP

6

Event centre composed
of mobile ELA rooms

IT'S OUR GAME



ELA rooms at the Ice Hockey World Champion- ship in Cologne

Exciting matchups featuring the best teams in the world were not the only attraction during the Ice Hockey World Championship in Germany and France. In front of the Lanxess Arena in Cologne, where the games were held, all eyes were on an event centre comprising 16 ELA containers at its core.

ELA prepared the containers on the basis of a customer concept and made customised adjustments. The result was a two-storey U-shaped event facility.

The open design provided an excellent view of the varied programme of events on the indoor stage. The event centre was rounded off with the on-site addition of a roof on cross beams.

"This was a highly customised project – from the structure without walls through to the special silver grey paintwork," explains ELA Area Sales Manager Sebastian Mader. This demonstrates that the many design options offered by ELA rooms extend far beyond standard solutions. "If the customer wants something special, then ELA can provide it – together with the best possible consulting and reliable service," states Mader.

Details

Location
Cologne

Type and number of containers
16 ELA quality all-rounders

Usable space
600 m²

Usage
Event centre with stage

Colour/floor
Exterior walls (at customer request):
silver grey (RAL 7001)
Interior walls and ceiling: white
Floor: marbled grey

Special equipment
Some modules without walls

Purchase or rental
Rental

Duration of usage
1 month

Installation deadline
05/2017

A NEW SHOPPING EXPERIENCE

7

ELA interim solutions for retail



The multi-functional sales rooms from ELA set the scene perfectly for retail goods.

“The basis for the presentation of goods is always a suitable space enabling a flexible design in line with the requirements of chain stores and retailers.”

Klaus Lüttel —
Head of Field Sales
ELA Container GmbH



Fig. top

Spacious, bright and friendly: this room solution invites customers to enjoy laid-back shopping.

Fig. bottom

Wood-effect floors: the ELA business rooms form the basis for customised design.



Fig. left

The 'display window': glass fronts tempt customers to enter the premises.

Shopping experience in ELA rooms

The presentation of goods is a key aspect of retail. Customers might be more drawn to beautifully decorated and attractively presented products. “The basis for the presentation of goods is always a suitable space enabling a flexible design in line with the requirements of chain stores and retailers,” explains Klaus Lüttel, Head of Field Sales at ELA. Working on behalf of the room specialist from the Emsland, Lüttel recently implemented an interim solution for the popular Iller-Center in Senden near Ulm.

“ELA containers are ideally suited to use as retail spaces,” he notes. “The modules are bright and can be combined in a flexible manner, making it possible to provide each retailer with the sales area needed – a total of 615 square metres for four shops.” The practical ELA quality all-rounders were used here as their standard dimensions provide numerous options when it comes to designing useable spaces. In addition to the sales rooms, ELA not only created storage rooms but also break and sanitary areas for the staff. It goes without saying that the modules were equipped with electrical installations, wirelessly networked smoke alarms and mirror louvre luminaires. The ramps and entrance platforms included in the delivery ensure barrier-free access to the interim shops positioned on mobile concrete foundations.

ELA containers are frequently used as sales rooms. In addition to the high-quality production of the room modules, clients are always won over by the attentive service provided. The planning and architecture company bieber AG Frankfurt am Main/Hannover is satisfied: “At the Iller-Center, customers can look forward to a special kind of shopping experience. Until then, modular shopping is available thanks to the smooth installation and assembly of the ELA solution,” says CEO Bieber.

Details

Location
Senden

Type and number of containers
44 ELA quality all-rounders
1 sanitary container
(combined to form one container facility)

Usable space
615m²

Usage
Sales rooms, storage rooms, break rooms, sanitary areas

Colour/floor
Exterior walls: concrete grey (RAL 7023)
Interior walls and ceiling: white
Floor: PVC flooring, marbled grey

Special equipment
Ramps and entrance platforms, emergency stairways, wirelessly networked smoke alarms, kitchenette, waste water tank, construction current distributor, substructure made from concrete slabs, mirror louvre luminaires

Purchase or rental
Rental

Duration of usage
1 year

Installation deadline
02/2017

ICE CREAM BOX FROM ELA

Mobile catering concept
on the beach in Dubai



The ice cream box fits in perfectly with the elegant surroundings of the luxury hotel.

8

ELA room solution for the Waldorf Astoria Hotel

When are customers most likely to want an ice cream or a cool drink? Thanks to the mobile catering concepts from ELA, caterers are able to position themselves directly at the point of sale. Having received a commission from Mövenpick, the ELA outpost in Dubai recently delivered an 'ice cream box' to the beach at the Waldorf Astoria Hotel on the artificial island of Palm Jumeirah. Temperatures here are typically above 30 degrees even in autumn, with holidaymakers turning to a cold ice cream or a drink as a welcome way to cool off.

"The ice cream box has gone down well," says ELA Director Business Development Cornelius Egbers, who is providing on-site supervision of this project in Dubai. "It is compact, easy to maintain and fits in perfectly with the high-quality surroundings of the hotel." The kiosk consists of a 13 square metre ELA room module with elegant black exterior paintwork, providing optimum all-round facilities for the sale of ice creams – from refrigerators, freezers and a dishwasher through to washbasins and ice cube trays. The roof covering offers shade to customers and vendors alike, with an air-conditioning unit inside the ice cream parlour also helping to ensure a pleasant room atmosphere.

"In searching for a supplier for mobile catering concepts," states Egbers, "the customer conducted market research that ultimately led them to ELA Container – and a decision to purchase the mobile catering solution." Since April 2016, an outpost in Dubai has ensured that the Emsland-based room specialist is also represented in the United Arab Emirates. "The construction industry in Dubai is booming and there is constant demand for mobile room solutions," he notes, adding that the company has sold a large number of office, residential, recreation room, storage and material containers since the launch of business activities. The range of solutions purchased has even included a school building.

Egbers concludes that "with this mobile ice cream parlour, we have demonstrated that ELA containers are a respectable solution and can even be integrated into the surroundings of a luxury hotel." Commercial Manager Yasir Aziz is satisfied with the result, praising the smooth order processing, delivery and assembly.

Details

Location
The Palm Jumeirah, Dubai

Type and number of containers
1 ELA quality all-rounder

Usable space
13 m²

Usage
Bar and ice cream sales

Colour/floor
Exterior walls (at request of customer):
RAL black 840 HK
Interior walls and ceiling: white
Floor: marbled blue

Special equipment
Stretch ceiling, canopies, roller shutters,
kitchen with dishwasher, sink, ice cube tray

Special features
Located directly on the beach in Dubai

Purchase or rental
Purchase

Duration of usage
Long term

Installation deadline
10/2016

DE

ELA Container GmbH Zentrale

Zeppelinstraße 19–21
49733 Haren (Ems)
Tel +49 5932 506-0
Fax +49 5932 506-10
www.container.de
info@container.de

ELA Container GmbH GCC

Im Industriepark 20
49733 Haren-Emmeln
Tel +49 5932 506-556
Fax +49 5932 506-10
www.container.de
info@container.de

ELA Container GmbH Groß Ippener

Am Gewerbegebiet 35
27243 Groß Ippener
Tel +49 4224 1414-300
Fax +49 4224 1414-310
www.container.de
info@container.de

ELA Container GmbH Frankenberg

Zum Hammerberg 1
09669 Frankenberg
Tel +49 37206 851-0
Fax +49 37206 851-10
www.container.de
info@container.de

ELA Container GmbH Billigheim

Schefflenzstraße 84
74842 Billigheim
Tel +49 6265 92775-0
Fax +49 6265 92775-10
www.container.de
info@container.de

ELA Container GmbH Moosburg

Naustraße 1
85368 Moosburg
Tel +49 8762 7266-800
Fax +49 8762 7266-810
www.container.de
info@container.de

BE

ELA Container Belgium BVBA

Eurolaan 9
9140 Temse
Tel +32 3 7719669
www.ela-container.be
info@ela-container.be

NL

ELA Container Nederland BV

Rouaanstraat 39
9723 CC Groningen
Tel +31 50 3182247
Fax +31 50 3185129
www.ela-container.nl
info@ela-container.nl

ELA Container Nederland BV

Welplaatkade 5
3197 KR Botlek-
Rotterdam
Tel +31 10 4165733
Mobil +31 6 20023412
www.ela-container.nl
info@ela-container.nl

ELA Container Participaties BV

Rouaanstraat 39
9723 CC Groningen
Tel +31 50 3182247
Fax +31 50 3185129
www.ela-container.nl
info@ela-container.nl

PL

ELA Container Polska Sp. z o.o.

ul. Łukasiewicza 6
05-200 Wołomin
Tel +48 22 4174190
Fax +48 22 4688700
www.ela-container.pl
info@ela-container.pl

ELA Container Polska Sp. z o.o./oddz. Wrocław

ul. Kupiecka 10
52-427 Wrocław
Tel +48 71 3336532
Fax +48 71 3336532
www.ela-container.pl
info@ela-container.pl

LT

ELA Container Lietuva UAB

Tilžės g. 60
91108 Klaipėda
Tel +370 46 492066
Fax +370 46 492067
www.ela-container.lt
info@ela-container.lt

RU

OOO ELA Container RU

ul. Koroleva 4,
Building 12, Office 22
249031 Obninsk
Russian Federation
Tel +7 48439 57247
www.ela-container.ru
info@ela-container.ru

UA

ELA Container Ukraine TOV

vul. Myru 19E
03134 Kyjiw
Tel +380 44 2270578
Mobile +380 50 9173434
www.ela-container.ua
info@ela-container.ua

UAE

ELA Container Middle East FZCO

LIU 10 – AE 01-03
Jebel Ali Free Zone South
Dubai
United Arab Emirates
P.O. Box 263905
Tel +971 4 8807015
www.ela-container.ae
info@ela-container.ae

WWW.
ELA-CONTAINER.
COM